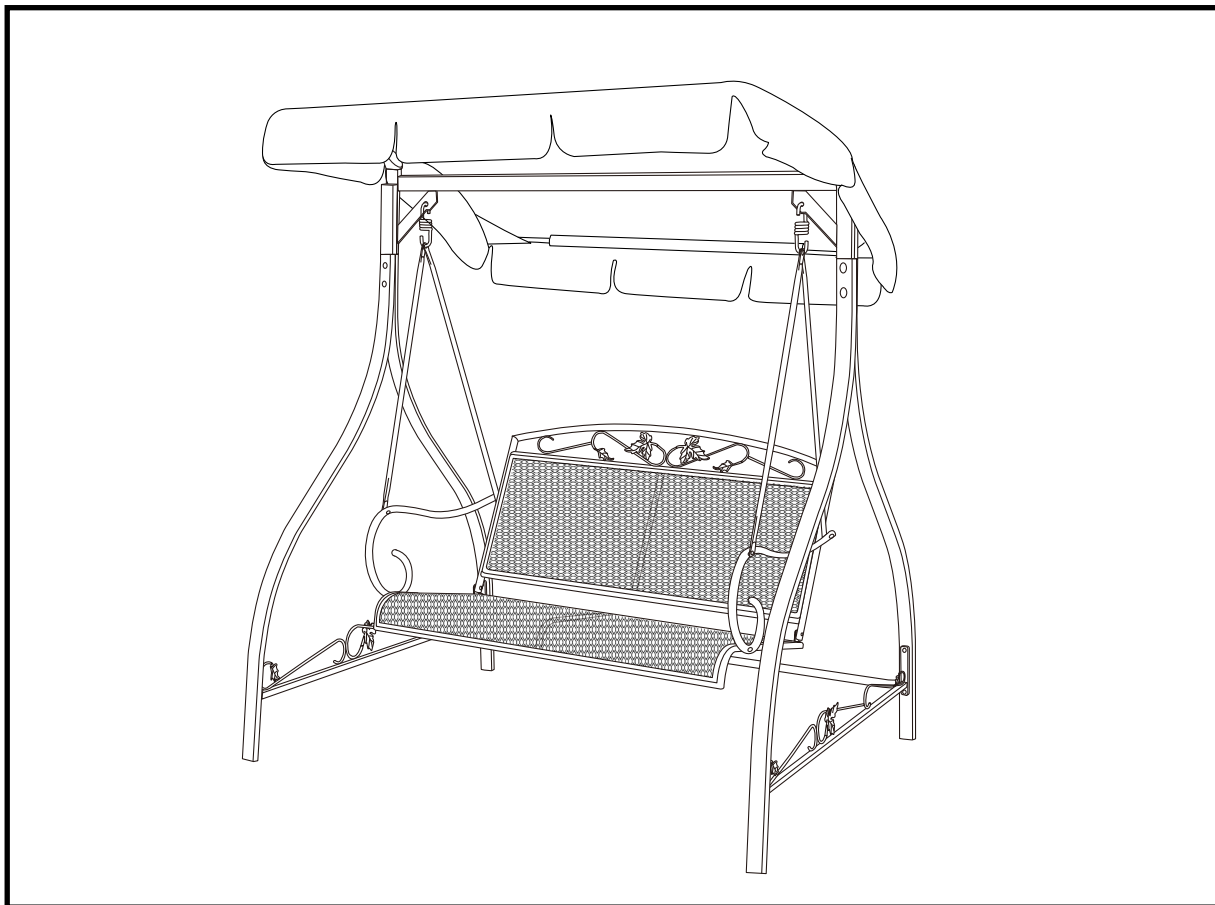


# ASSEMBLY INSTRUCTIONS

ATTENTION: THIS PRODUCT IS NOT FOR COMMERCIAL USE  
INTENDED FOR RESIDENTIAL USE ONLY.

RLS409A-WM



- ⚠ Do not discard any of the packaging until you have checked that you have all of the parts and fittings required.
- ⚠ Keep children away during assembly. This item contains small parts that can be swallowed by children. Children should always be under direct adult supervision while using this product.
- ⚠ Retain these assembly instructions for future reference.
- ⚠ Quote the following FQC NO. when contacting the service center.

SERVICE CENTER TOLL FREE NO.

TEL: 1-877-539-7436

FAX: 1-877-539-7439



**DON'T RETURN TO STORE!**

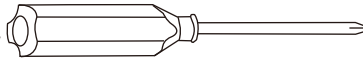
PAGE 1 OF 6

COURTYARD CREATIONS INC.

A. Read these instructions thoroughly and acquaint yourself with the parts and the illustrations to ensure safe and proper assembly.

B. You will need the following tools

- Phillips Screwdriver



- Nut Wrench (See Part #29)



- Hex. Key Wrench (See Part #28)



C. Lay out all of the parts and match them with the table below.

## PARTS LIST

PART NO.	MATERIAL CODE	PART	Q'TY
1	RLS409A-CS01	 TOP CROSS BEAM W/ADJUSTABLE TEETH	1
2	62RLS409AH102	 REAR CROSS BRACE	1
3	27LA08098	 RIGHT LATERAL CROSS BRACE	1
4	27LA08097	 LEFT LATERAL CROSS BRACE	1
5	RLS409A-CS02	 FRONT UPRIGHT SUPPORT	2
6	RLS409A-CS03	 REAR UPRIGHT SUPPORT	2
7	RLS409A-CS04	 SWING ARM	2
8	RLS409A-CS05	 SEAT ASSEMBLY	1
9	RLS409A-CS06	 BACK ASSEMBLY	1
10	62RLS409AM101	 SWING ARM TUBE	4
11	62RLS409AI101	 SIDE CANOPY BRACE	2
12	62RLS409AH201	 FRONT/REAR CANOPY BRACE	2
13	17GA06081101	 SUSPENSION SPRING	2
14	17C01A0821061Y4	 BOLT M8*60	4
15	17C01A0706002Y4	 BOLT M6*16	6

PART NO.	MATERIAL CODE	PART	Q'TY
16	17C01A0716072Y4	 BOLT M6*45	2
17	17C01A0712002Y4	 BOLT M6*35	6
18	17C01A0710002Y4	 BOLT M6*30	2
19	17C17A1306001Y4	 SCREW ST4.2*16	4
20	17FA08060601-Y4	 WASHER d8.5*D17*1.6	8
21	17FA05050401-Y4	 WASHER d6.5*D16*1.2	22
22	18000C06001	 PLASTIC NUT M8*P1.25	4
23	18000C23001	 PLASTIC NUT M6*P1.0	6
24	18000337005	 BOLT CAP M8	4
25	18000337002	 BOLT CAP M6	16
26	18000615004	 CANOPY/FRAME CONNECTOR	2
27	18000018001	 PLASTIC SCREW	2
28	17KAA0201----Y4	 HEX KEY WRENCH 6MM	1
29	17KAB1201----Y4	 NUT WRENCH 13&17MM	1
30	61R409AD00001BA	 CANOPY	1



**DON'T RETURN TO STORE!**

Note:

When fastening with bolts and nuts, always use a washer (#20 and #21) between the tube and the bolt and the tube and the nut.

#### Step A - 1 :

Fasten the front and rear upright supports (#5 and #6) at the top by using bolts (#14), washers (#20), and plastic nuts (#22). Do the same procedure for both sides. Keep the bolts loose.

#### Step A - 2 :

At both ends, insert the assembled upright supports (#5 and #6) into the top cross beam w/adjustable teeth (#1). Tighten all of the plastic nuts and bolts.

#### Step A - 3 :

Fasten the lateral cross braces (#3 and #4) to the upright supports (#5 and #6) by using bolts (#15) and washers (#21). Do the same procedure for both sides.

Note:

1. Do not fasten the lower rear holes of them yet.
2. To ensure proper assembly, the label marked "L" and "R" on the lateral cross brace (#3 and #4) should coincide with the label marked "L" and "R" on the front upright supports (#5).

#### Step A - 4 :

Fasten the rear cross brace (#2) to the rear upright supports (#6) by using bolts (#16), washers (#21), and plastic nuts (#23). Tighten all of the plastic nuts and bolts.

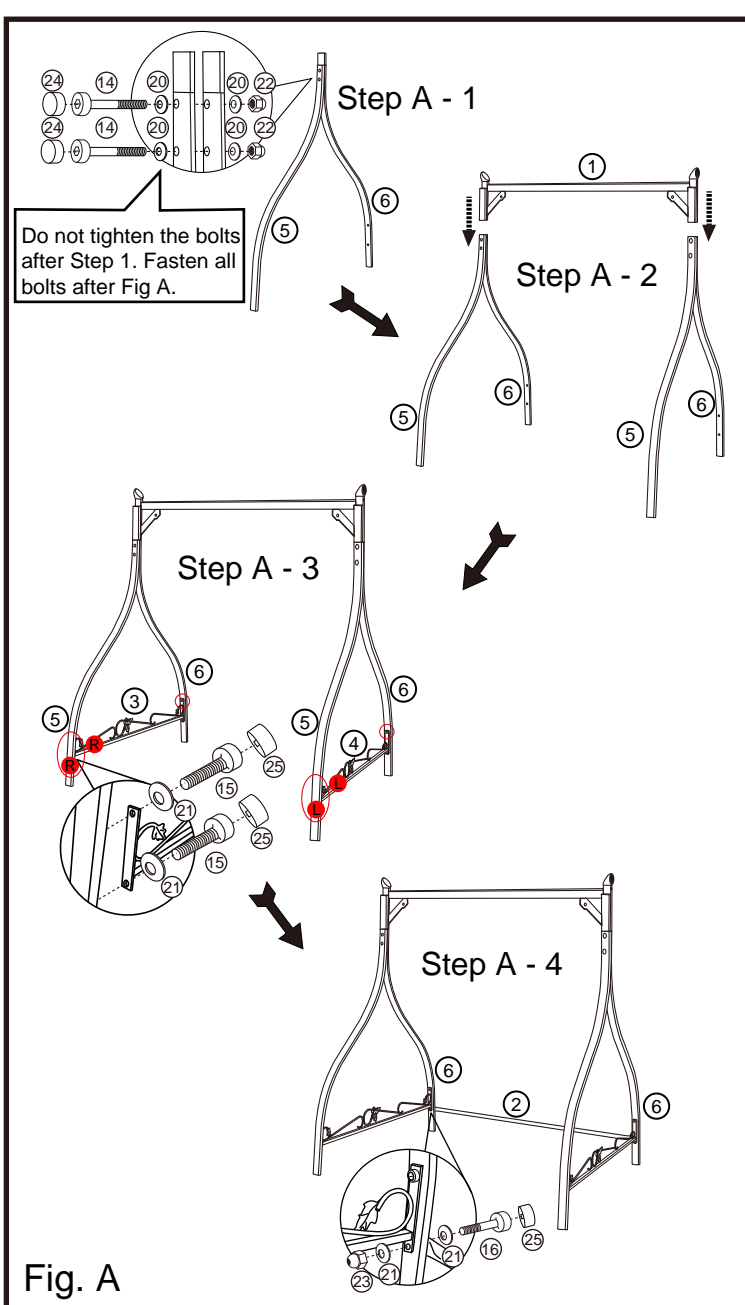


Fig. A

#### Step B :

Fasten the back assembly (#9) to the seat assembly (#8) by using bolts (#17), washers (#21), and plastic nuts (#23). Tighten all of the plastic nuts and bolts.

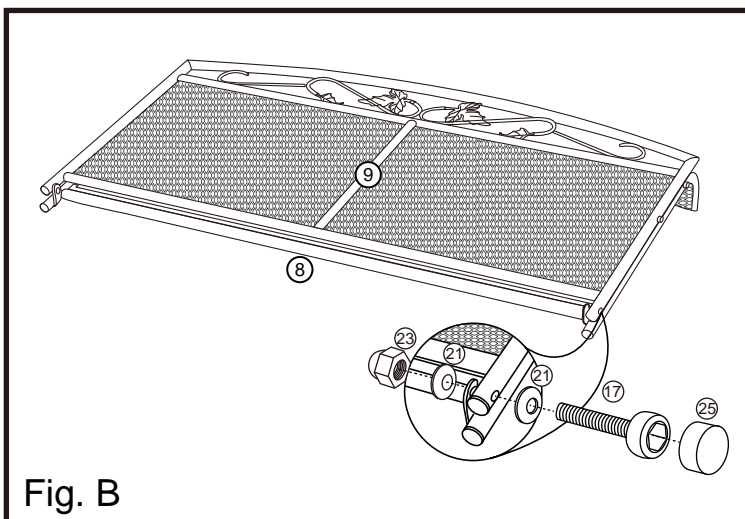
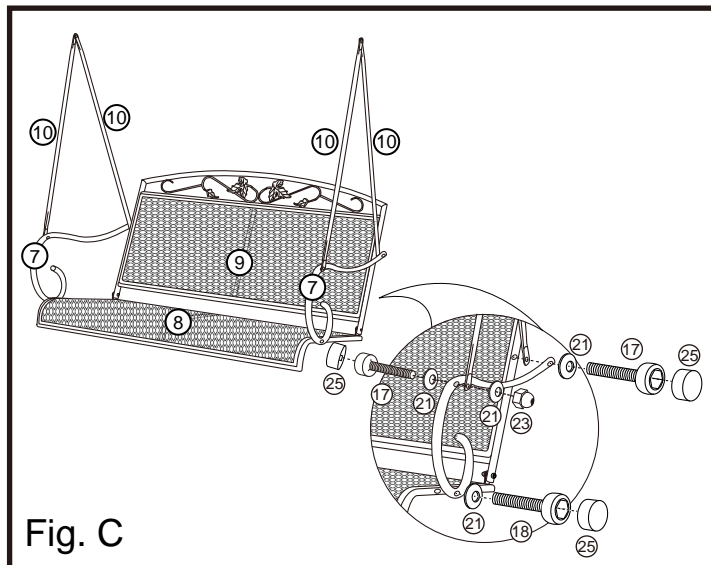


Fig. B



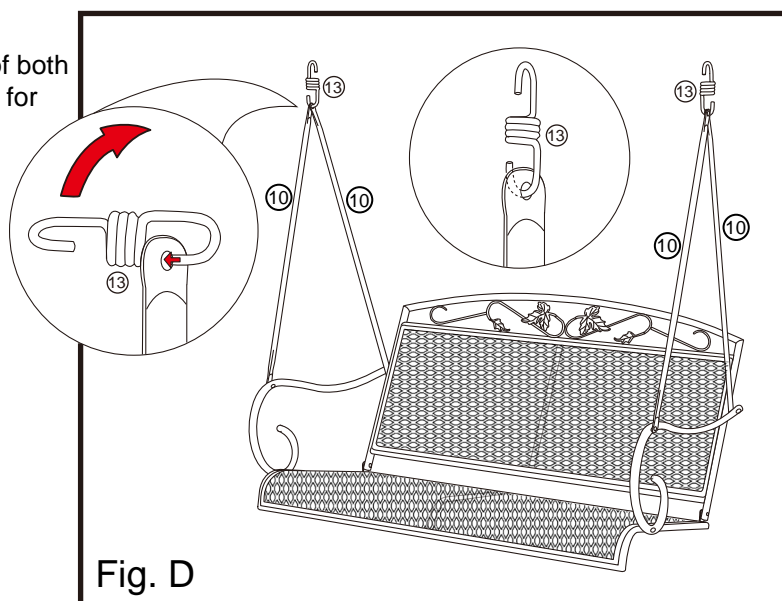
**DON'T RETURN TO STORE!**

**Step C :**  
 Open the seat and back assembly and fasten a swing arm tube (#10) and a swing arm (#7) to the back assembly (#9) by using bolt (#17) and washers (#21). Do the same procedure for both sides. Fasten another swing arm tube (#10) to the swing arm (#7) at the front bend by using bolt (#17), washers (#21), and plastic nut (#23). Do the same procedure for both sides. Fasten the other end of the swing arm (#7) to the seat assembly (#8) by using bolt (#18) and washers (#21). Do the same procedure for both sides.



**Fig. C**

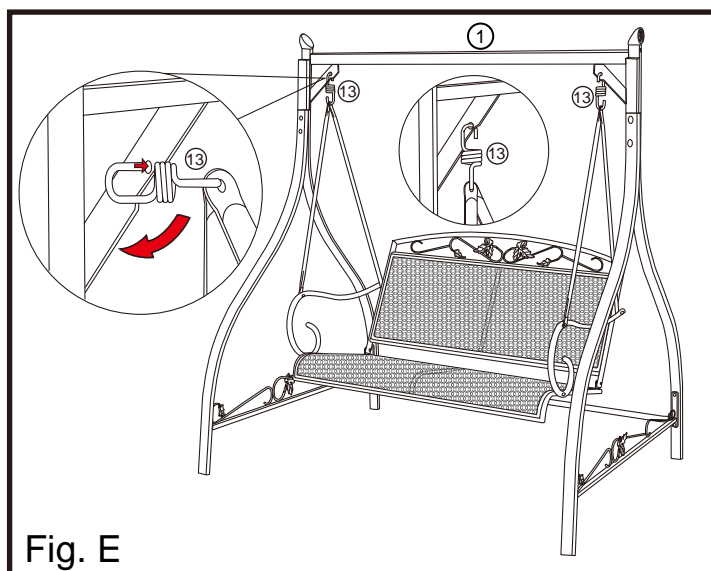
**Step D :**  
 Hook the suspension spring (#13) into the top of both swing arm tubes (#10). Do the same procedure for both sides.



**Fig. D**

**Step E :**  
 Hang the other side of the suspension spring (#13) into the hole located on the angled brace on the top cross beam w/adjustable teeth (#1). Do the same procedure for both sides.

**Warning :**  
 Make sure that both ends of the suspension springs (#13) go completely through the holes in the angled braces on the top cross beam w/adjustable teeth (#1) and the swing arm tubes (#10).



**Fig. E**



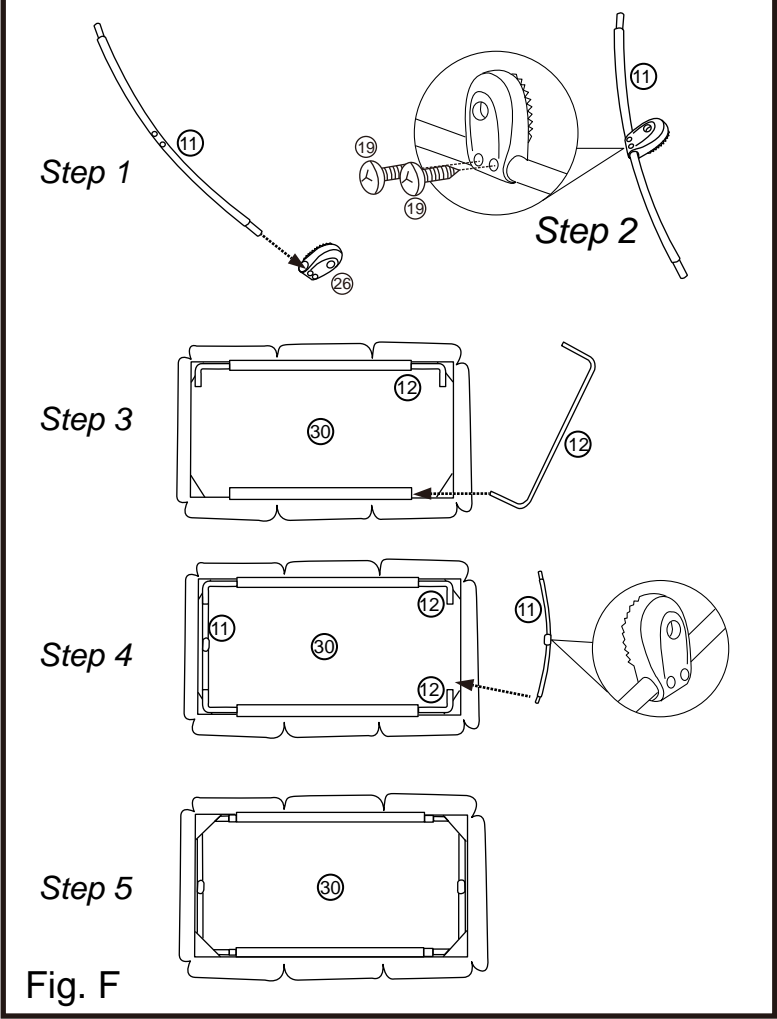
**DON'T RETURN TO STORE!**

Step F - 1 and Step F - 2 :  
Slide the canopy/frame connectors (#26) onto the side canopy braces (#11) and fasten into position by using screws (#19). Make sure that the teeth of the canopy connectors are facing towards the inside of the swing.

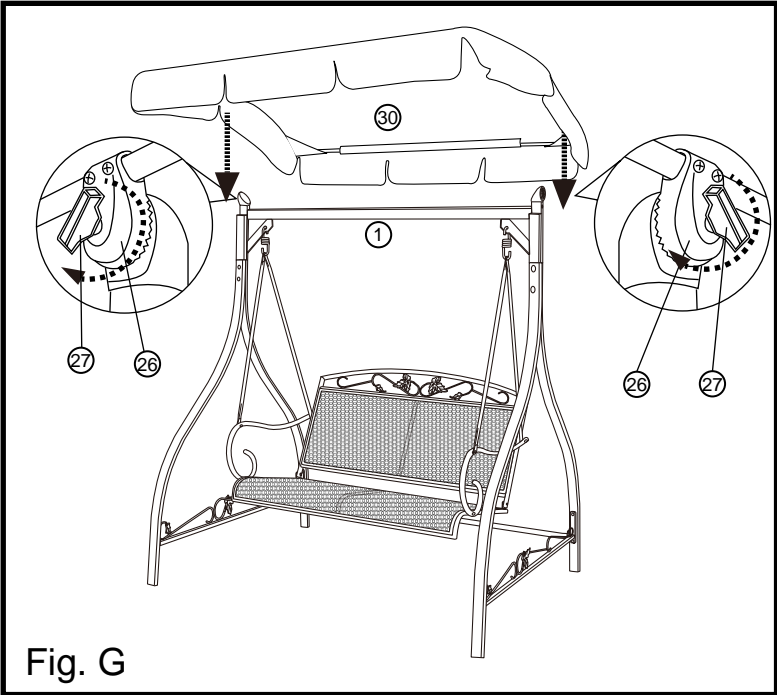
Step F - 3 :  
Insert the front and rear canopy braces (#12) into the sleeves of the canopy (#30).

Step F - 4 :  
Insert the tube ends of the side canopy braces (#11) into the front and rear canopy braces (#12).

Step F - 5 :  
Insert the corners of the front and rear canopy braces (#12) into the pockets of the canopy (#30).



Step G :  
Fasten the canopy/frame connectors (#26) on the canopy assembly to the adjustable teeth on both sides of the top cross beam (#1) by using plastic screws (#27).



Step H :  
To assure stability, double check that all of the bolts have been completely tightened and cover them with bolt caps (#24 and #25).

Warning :  
To avoid danger of suffocation, always keep plastic bags or small parts away from babies and children.

Cleaning and Maintenance

- Wash frame and fabric parts with mild soap and water, rinse thoroughly, and dry completely. Do not use bleach, acid, or other solvents on the frame or fabric.
- The cushions and canopy may be surface washed with mild soap and water if necessary. Commercial foaming upholstery cleaner may also be used. Rinse well and hang to dry. Do not machine wash or dry.
- We recommend the use of furniture covers to protect your swing when not in use.
- Inspect and tighten all bolts and fasteners on a regular basis to ensure proper performance and safety of your swing.
- In order to prolong the life and beauty of your swing, we recommend that the cushions and fabric parts be stored in a dry and protected area during off season periods (i.e. overnight or on rainy days)

Special Warnings

1. The user of this swing should always inspect it before each use.
2. It is essential to place this swing on level ground and not less than 6 feet from any obstruction; such as fences, garages, houses, overhanging branches, laundry lines, or electrical wires.
3. Check the tightness of all of the nuts and bolts on a regular basis.
4. Make sure that the suspension springs are properly secured before each use.
5. Always remove the canopy in heavy wind conditions; otherwise the canopy may tip over and cause damage to its parts.
6. The manufacturer will not accept responsibility for unauthorized repairs or modifications to the swing or its parts.
7. Oil all of the metal parts that move regularly.
8. Weight limit is 500 lbs.



Fig. H

STOP!

Missing A Part?  
No Need To Go Back To  
The Store

The store where you made your purchase  
does not stock parts for this item.  
If you need parts,  
whether they are missing or damaged,  
Call Toll Free:  
TEL: 1-877-539-7436  
FAX: 1-877-539-7439  
Call us between 9:00 AM and 4:30 PM  
Eastern Time Monday through Friday

READ THESE INSTRUCTIONS COMPLETELY BEFORE STARTING ASSEMBLY

- ★ SEPARATE AND IDENTIFY ALL PARTS, MAKING SURE THAT YOU HAVE ALL OF THE PARTS LISTED.
- ★ IF YOU DO NOT LOCATE ALL OF THE PARTS LISTED, INSPECT THE PACKING MATERIAL FOR SMALL PARTS THAT MAY HAVE BECOME SEPARATED DURING SHIPMENT.
- ★ IF YOU EXPERIENCE ANY DIFFICULTY DURING ASSEMBLY OR IF ANY PARTS ARE MISSING OR DAMAGED, CALL THE HELP LINE AT 1-877-539-7436 BEFORE RETURNING THIS ITEM TO THE STORE.
- ★ PROVIDE THE FOLLOWING INFORMATION WHEN CALLING:  
1-MODEL NUMBER OF THE PRODUCT.  
2-PART NUMBER AND MATERIAL CODE OF THE PART FROM THE PARTS LIST
- ★ MOST PROBLEMS CAN BE RESOLVED WITHOUT RETURNING THIS PRODUCT TO THE RETAILER.



DON'T RETURN TO STORE!